

**DC-18 GHz****THUMB WHEEL
AND PANEL MOUNT
STEP ATTENUATORS**

- Broadband DC-18 GHz
- Small Size
- Precision Construction/High Reliability
- Precision 1 dB steps, to 69 dB
- Panel Mount or Stand Alone

SPECIFICATIONS

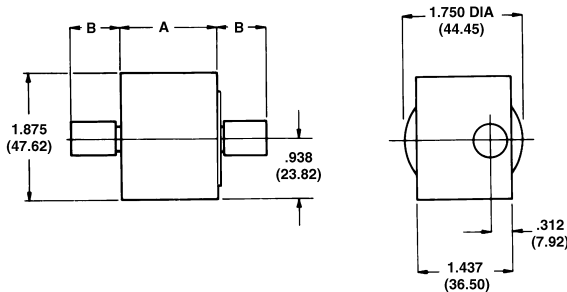
| | Model 741 4741 | Model 743-60 4743-60 | Model 745-69 4745-69 |
|---|------------------------------------|--|--|
| Type N Female Connectors SMA Female Connectors | | | |
| Frequency Range (GHz) | DC-18 | DC-18 | DC-18 |
| Attenuation (dB) | 0-9dB in 1-dB steps | 0-60 dB in 10-dB steps | 0-69 dB in 1-dB steps |
| Relative (dB) Attenuation Deviation | Step Deviation | Step Deviation | Step Deviation |
| | 0 dB 0.5 | 0 0.5 | 0 1.0 |
| | 1 dB ±0.5 | 10 ±0.5 | 1-9 ±0.5 |
| | 2 dB ±0.5 | 20 ±0.7 | 10-19 ±1.0 |
| | 4 dB ±0.5 | 30 ±0.9 | 30-39 ±1.4 |
| | 3 dB ±0.5 | 40 ±1.0 | 20-29 ±1.2 |
| | 5 dB ±0.5 | 50 ±1.3 | 40-49 ±1.5 |
| | 6 dB ±0.5 | 60 ±1.5 | 50-59 ±1.9 |
| | 7 dB ±0.5 | | 60-69 ±2.0 |
| | 8 dB ±0.5 | | |
| 9 dB ±0.5 | | | |
| Resettability/per drum (dB) | <0.05 | <0.05 | <0.05 |
| VSWR (Max) | 1.50 | 1.50 | DC-12.4 GHz;1.50 12.4-18 GHz;1.65 |
| Impedance (Ohms) | 50 | 50 | 50 |
| Temperature Stability (dB/dB/°C) | 0.0001 | 0.0001 | 0.0001 |
| Power: | | | |
| Average (Watts) | 2 | 2 | 2 |
| Peak (kW at duty cycle of 0.0001) | 0.2 | 0.2 | 0.2 |

Attenuators

ORDERING INFORMATION

- Prefix "7" denotes Type N Stainless Steel Connectors (741, 743, 745)
Prefix "47" denotes SMA Stainless Steel Connectors (4741, 4743, 4745)
- All units are bidirectional.

OUTLINE DRAWINGS

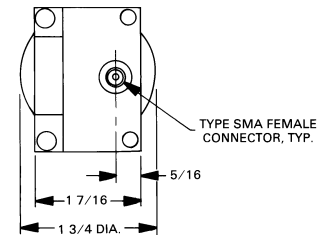
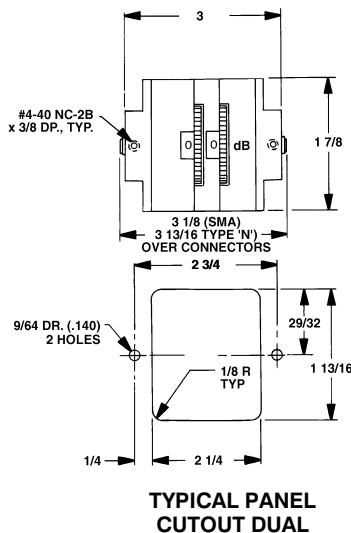
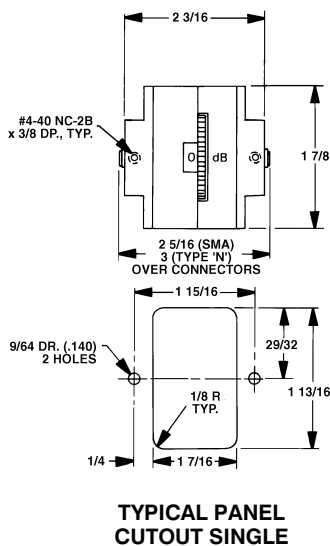


Dimensions in parentheses are in millimeters and for reference only.
Connectors made without interference per MIL-C-39012.

| Model No. | A | B (MAX) | CONN |
|-----------|---------------|--------------|---------------|
| 741 | 1.125 (28.75) | .781 (19.83) | TYPE N FEMALE |
| 743-60 | 1.437 (36.50) | | |
| 745-69 | 2.250 (57.15) | | |

| Model No. | A | B (MAX) | CONN |
|-----------|---------------|--------------|-----------------|
| 4741 | 1.125 (28.75) | .437 (11.10) | TYPE SMA FEMALE |
| 4743-60 | 1.437 (36.50) | | |
| 4745-69 | 2.250 (57.15) | | |

Typical Rack Mount Configurations For 740 Series Thumb Wheel Stop Attenuators



All dimensions are Max. unless otherwise specified.